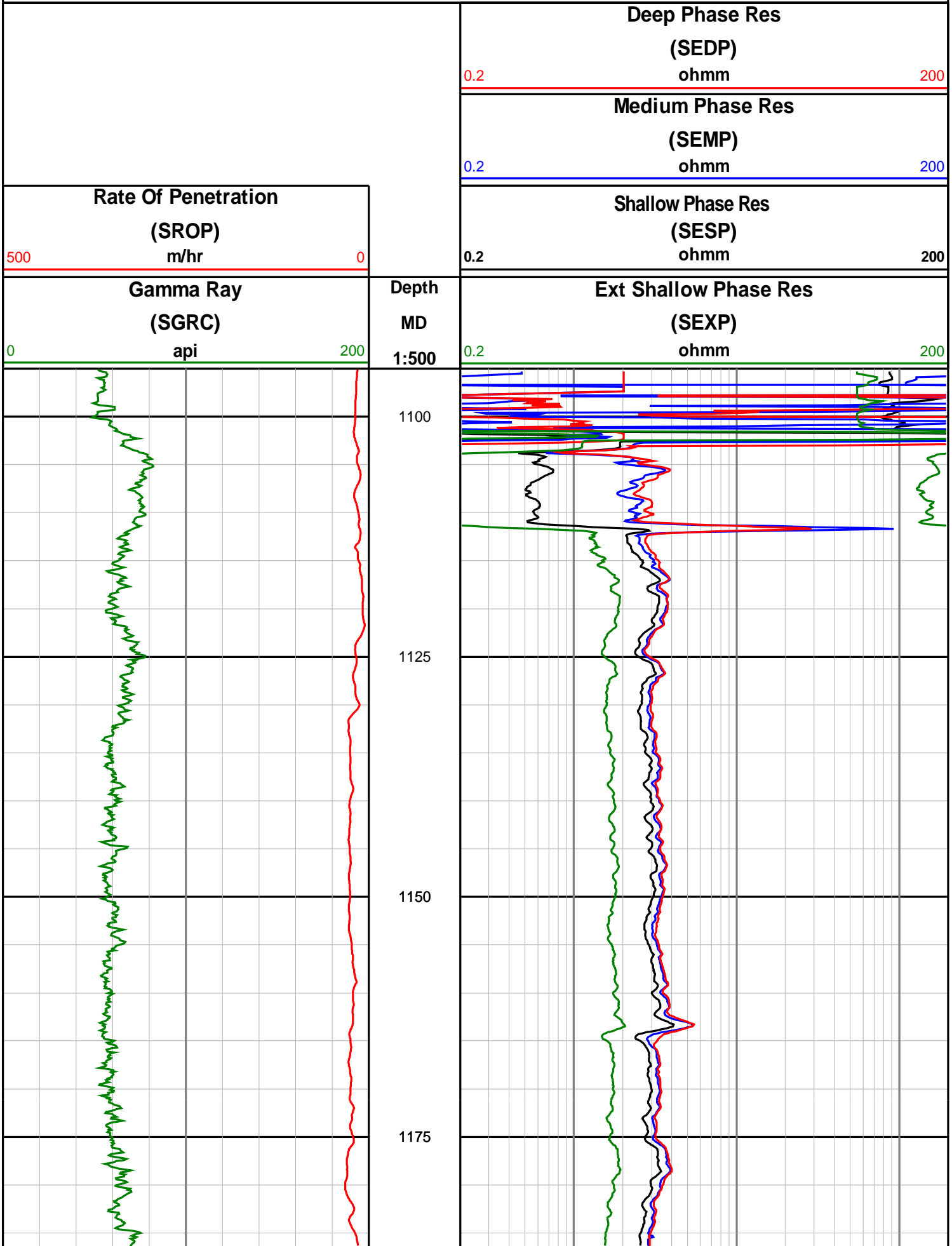
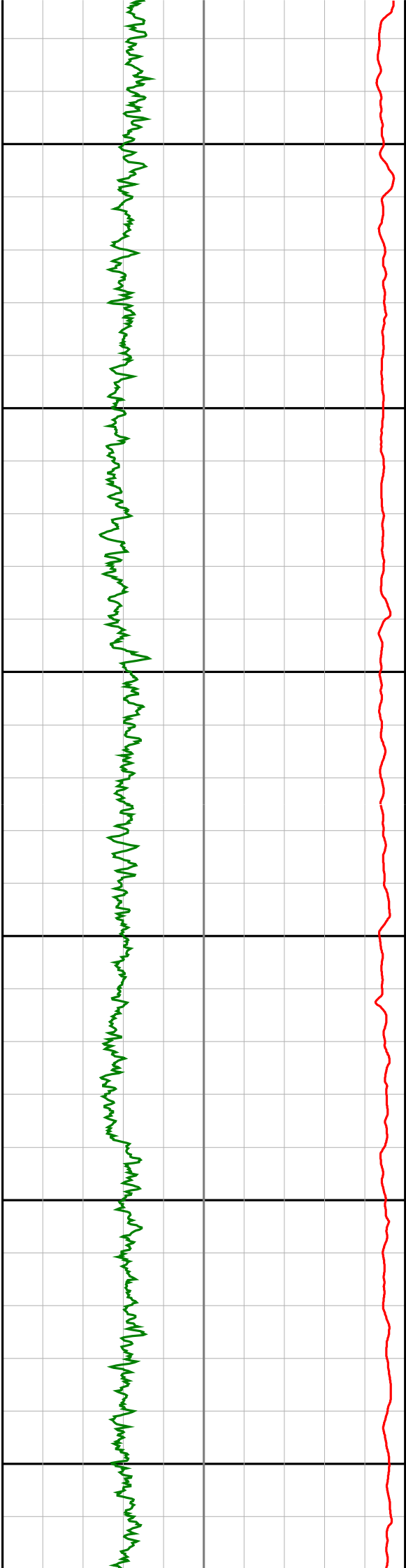


Anzon Australia Ltd

Basker-3

Recorded LWD Log (Permanent Datum - LAT)





1200

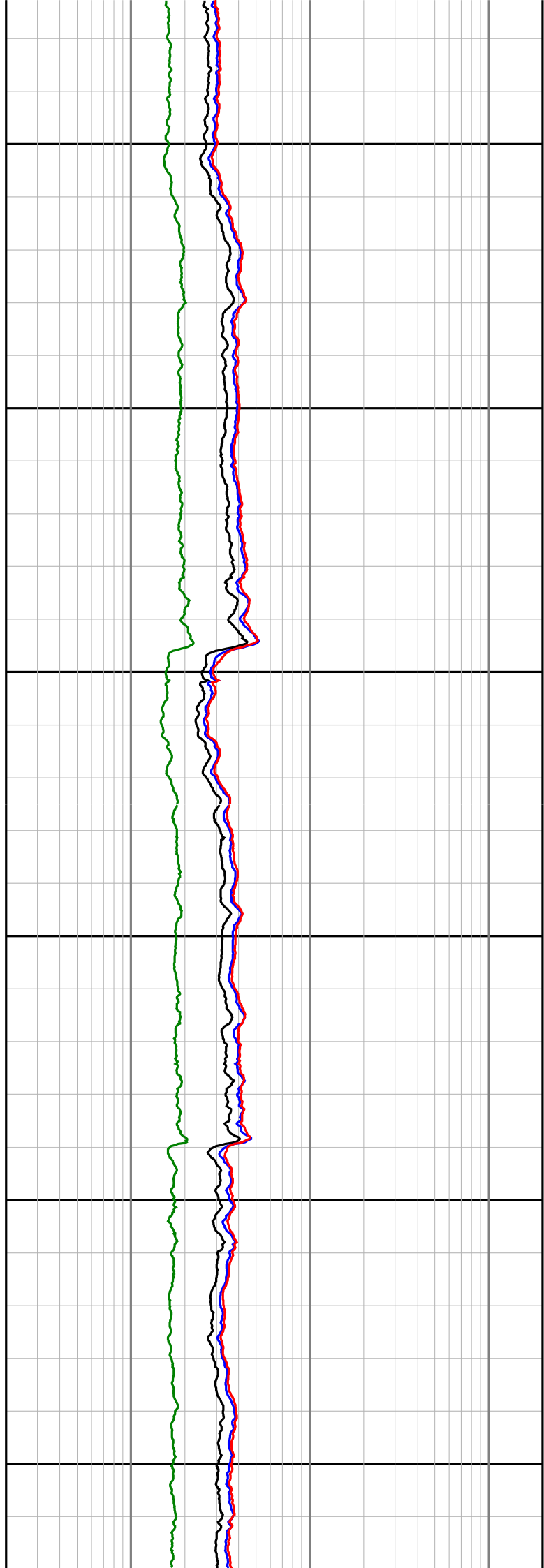
1225

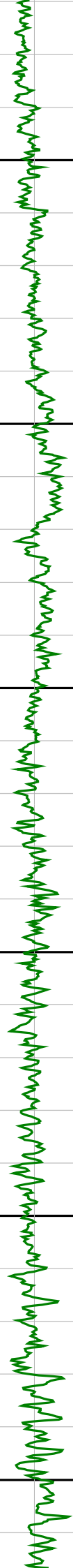
1250

1275

1300

1325





1350

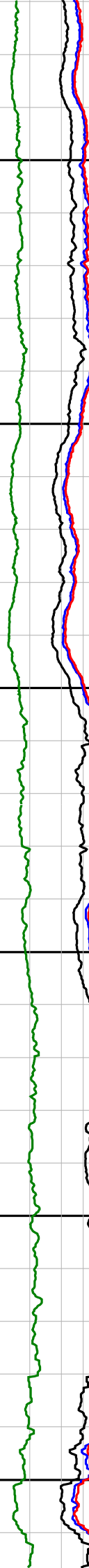
1375

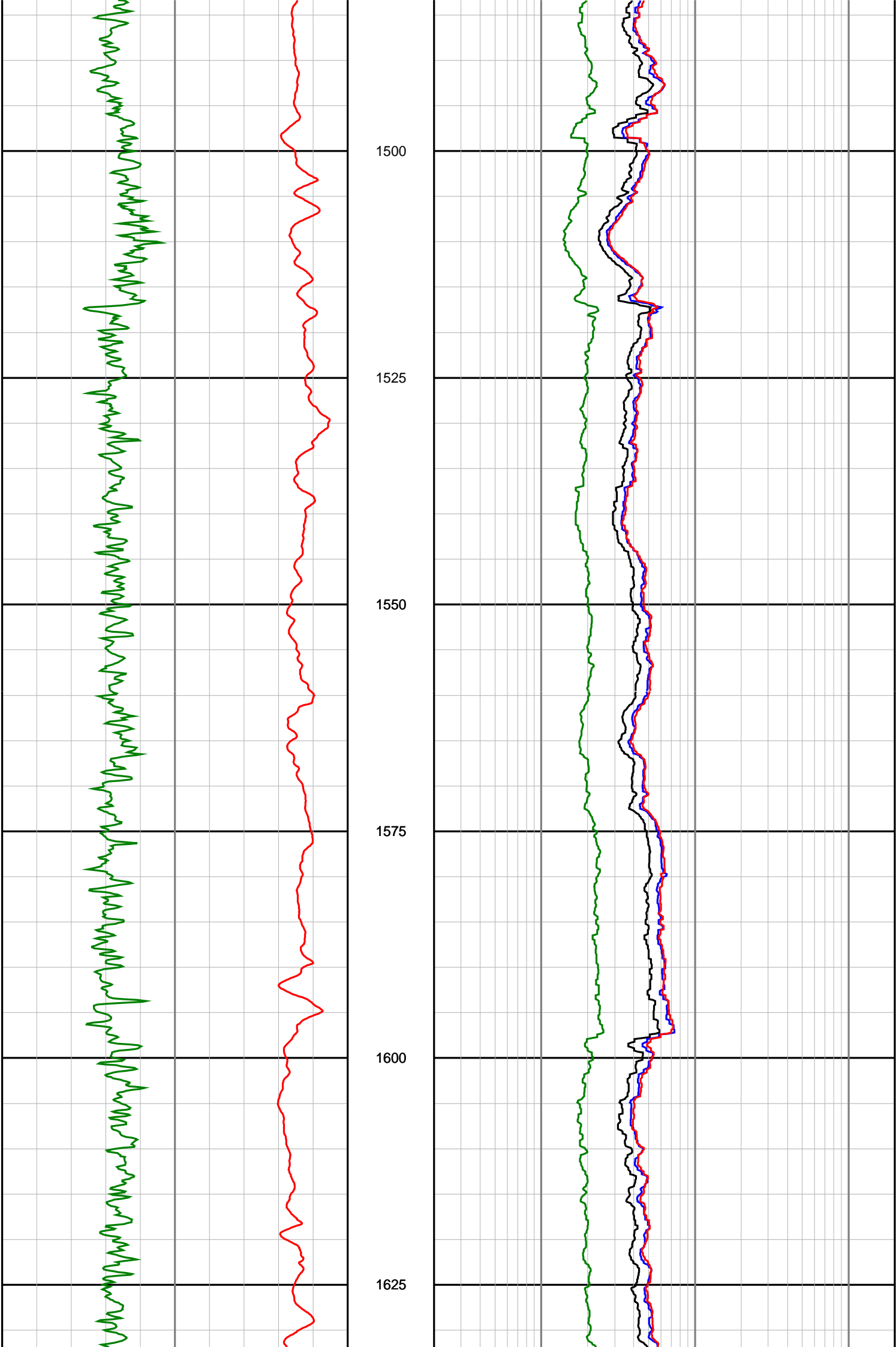
1400

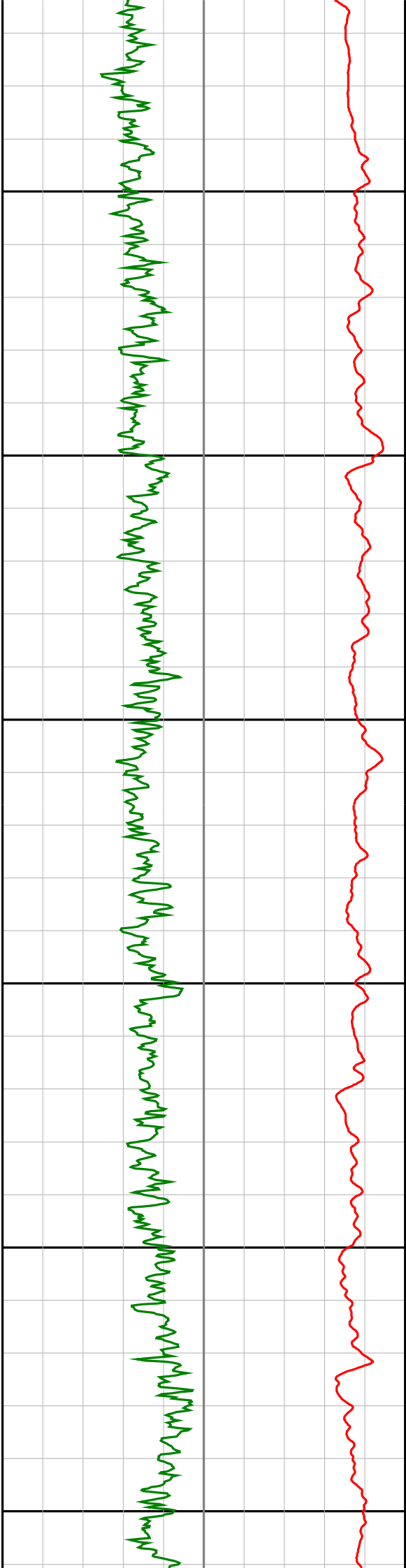
1425

1450

1475







1650

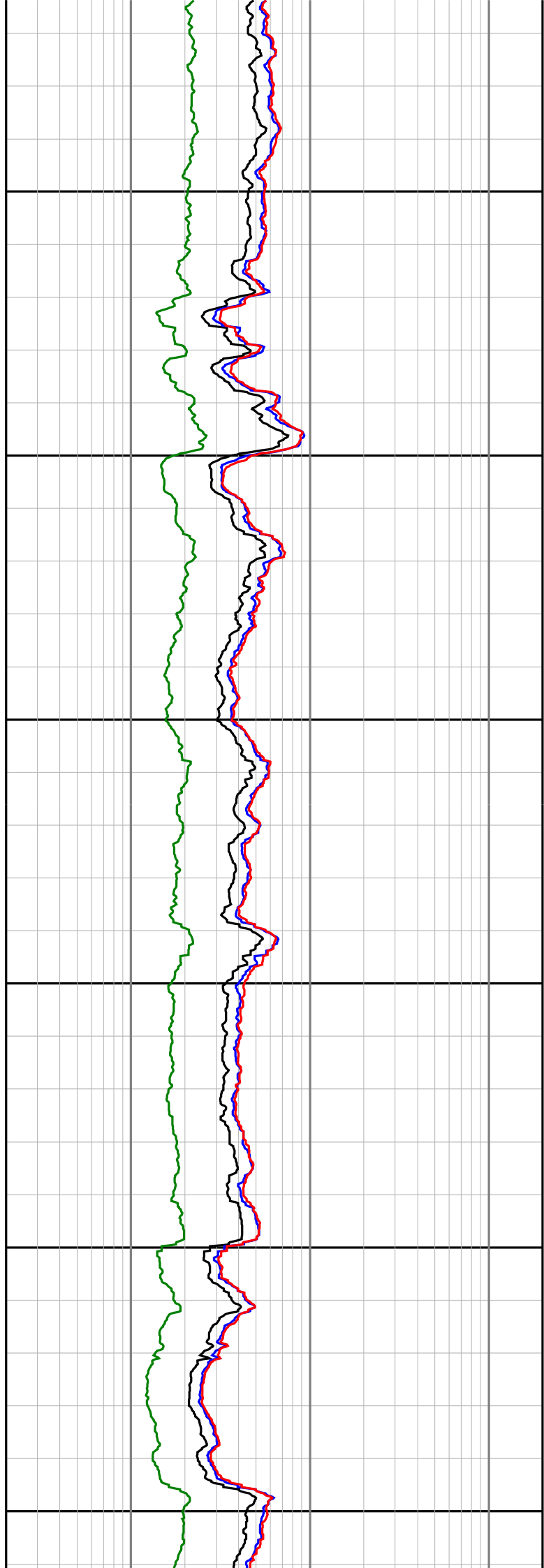
1675

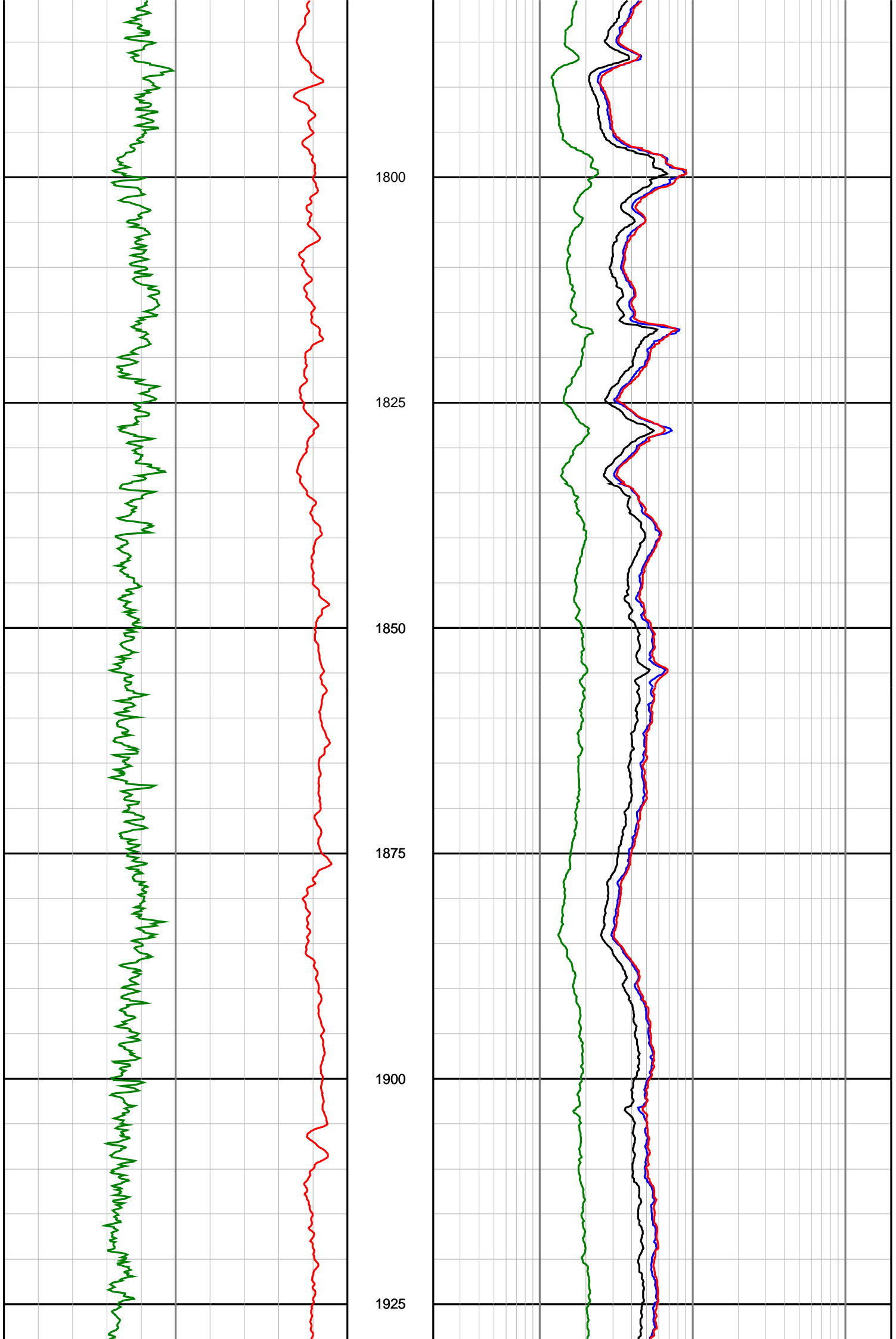
1700

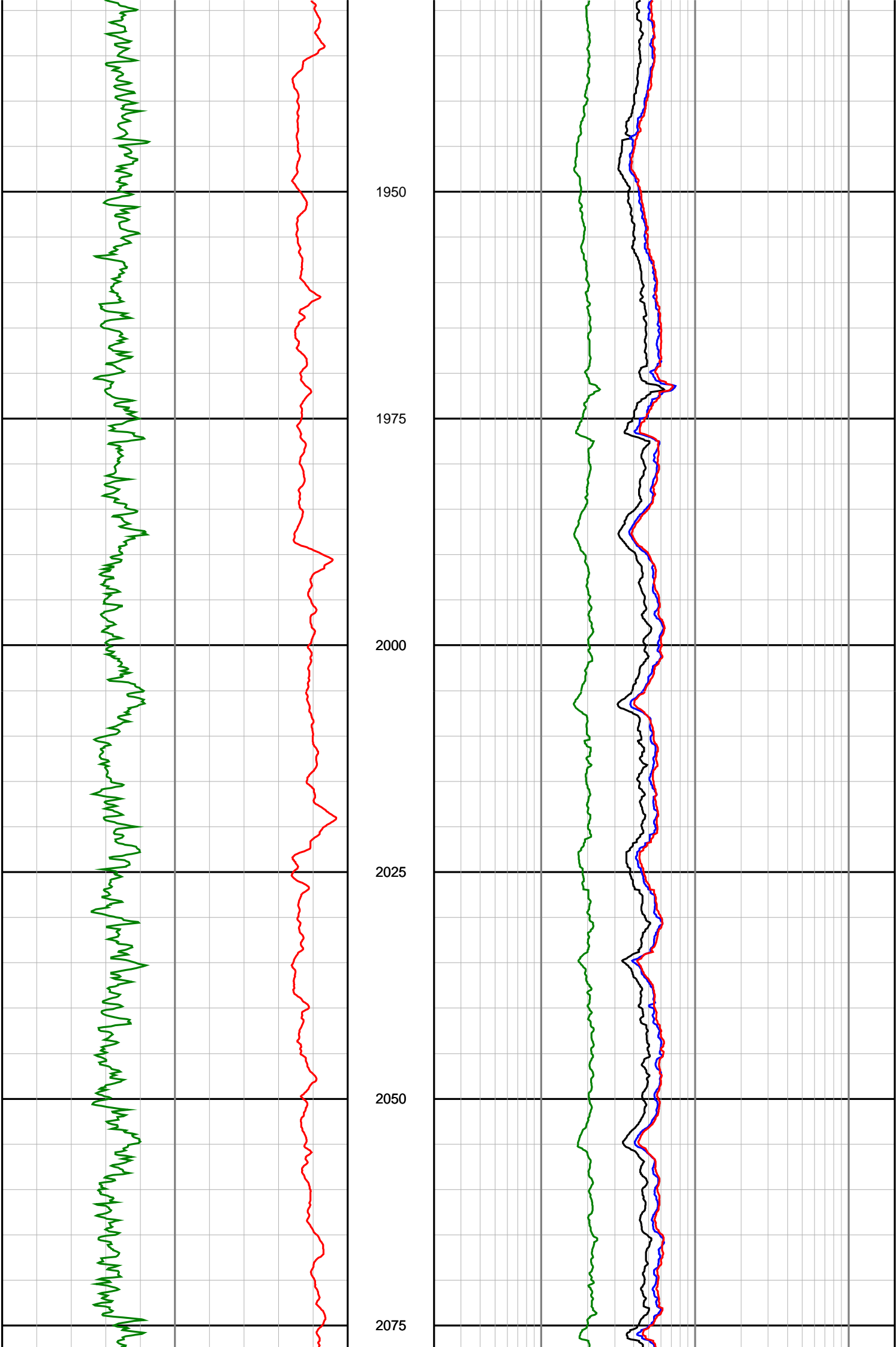
1725

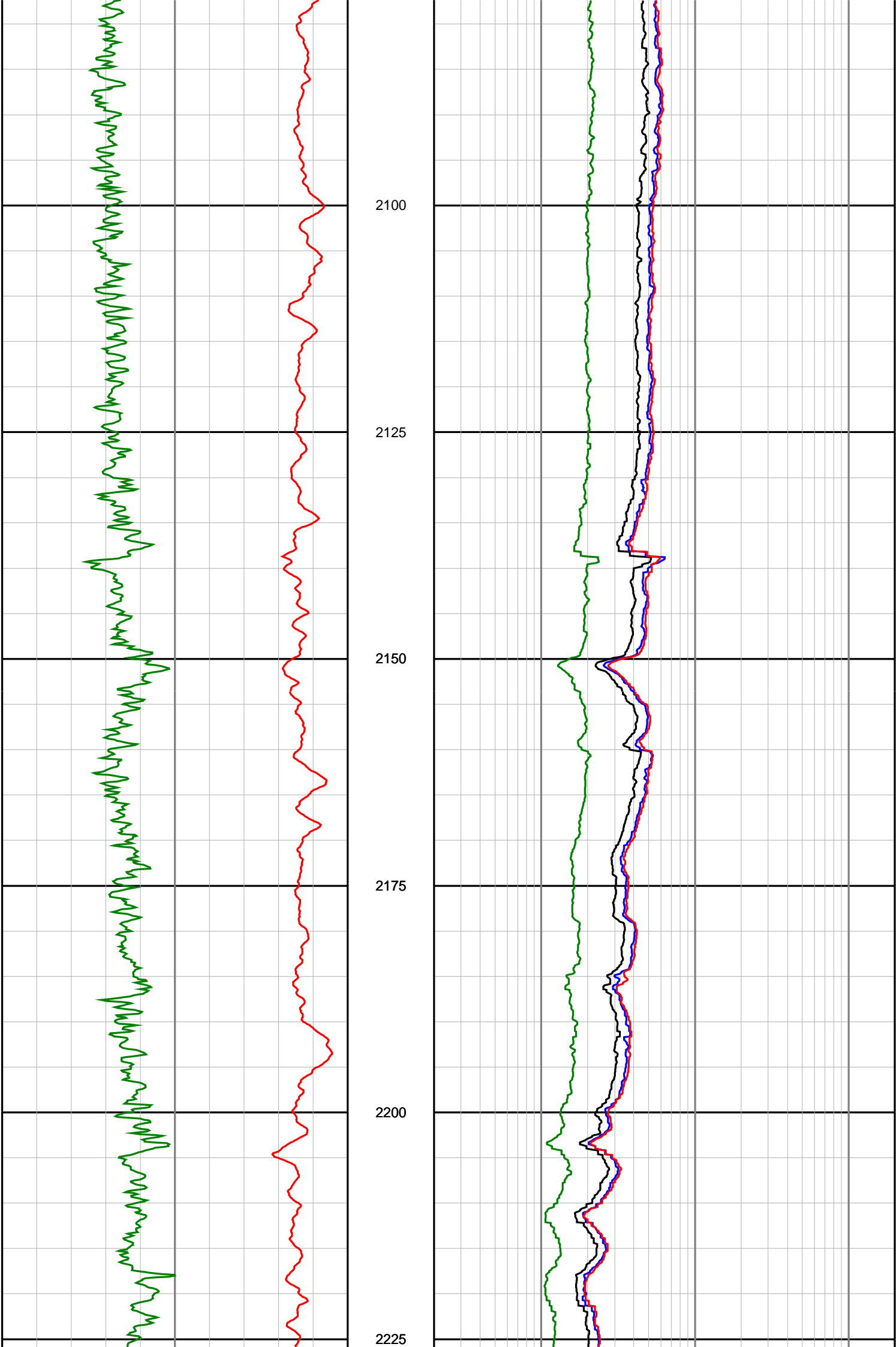
1750

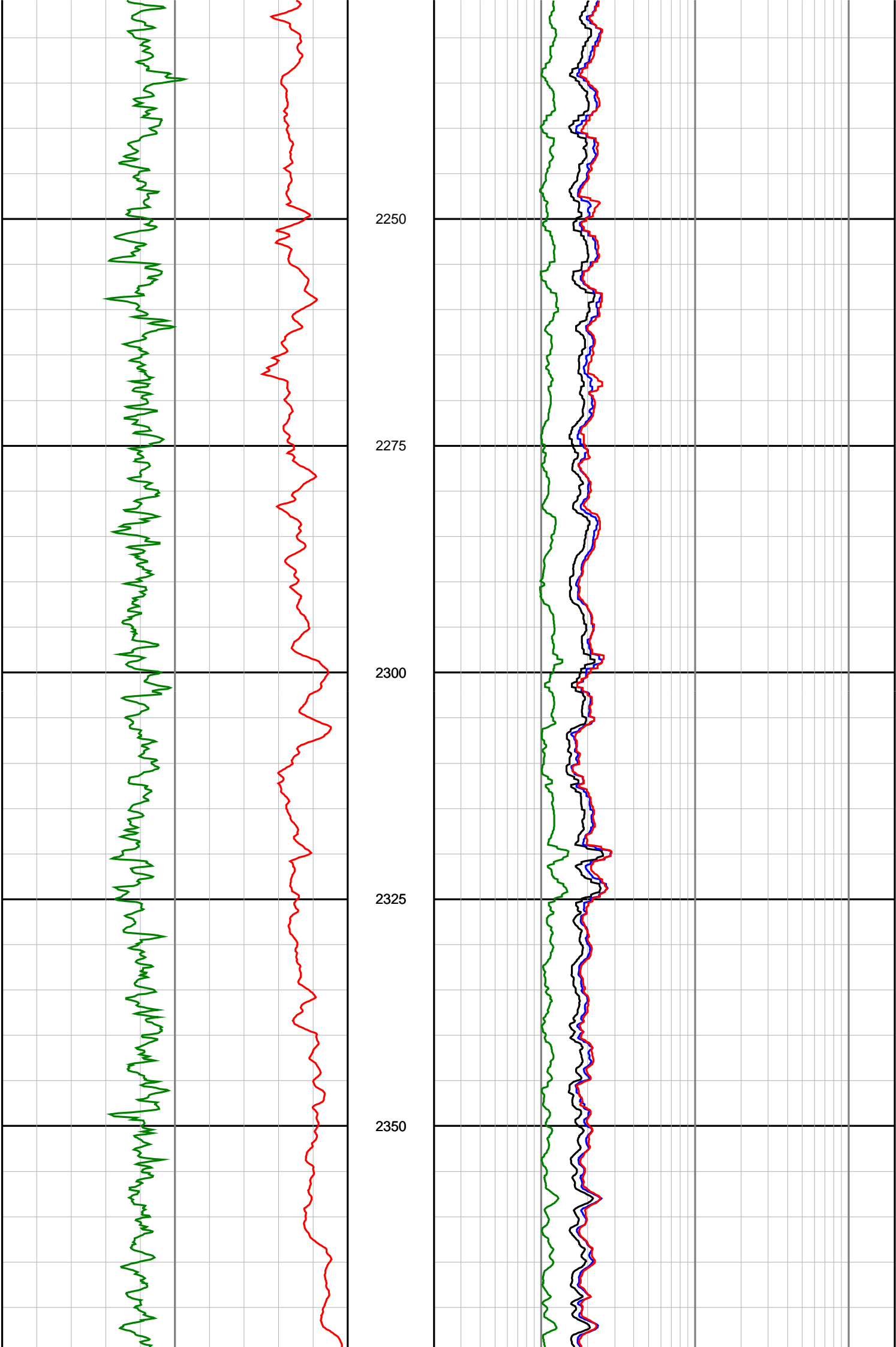
1775

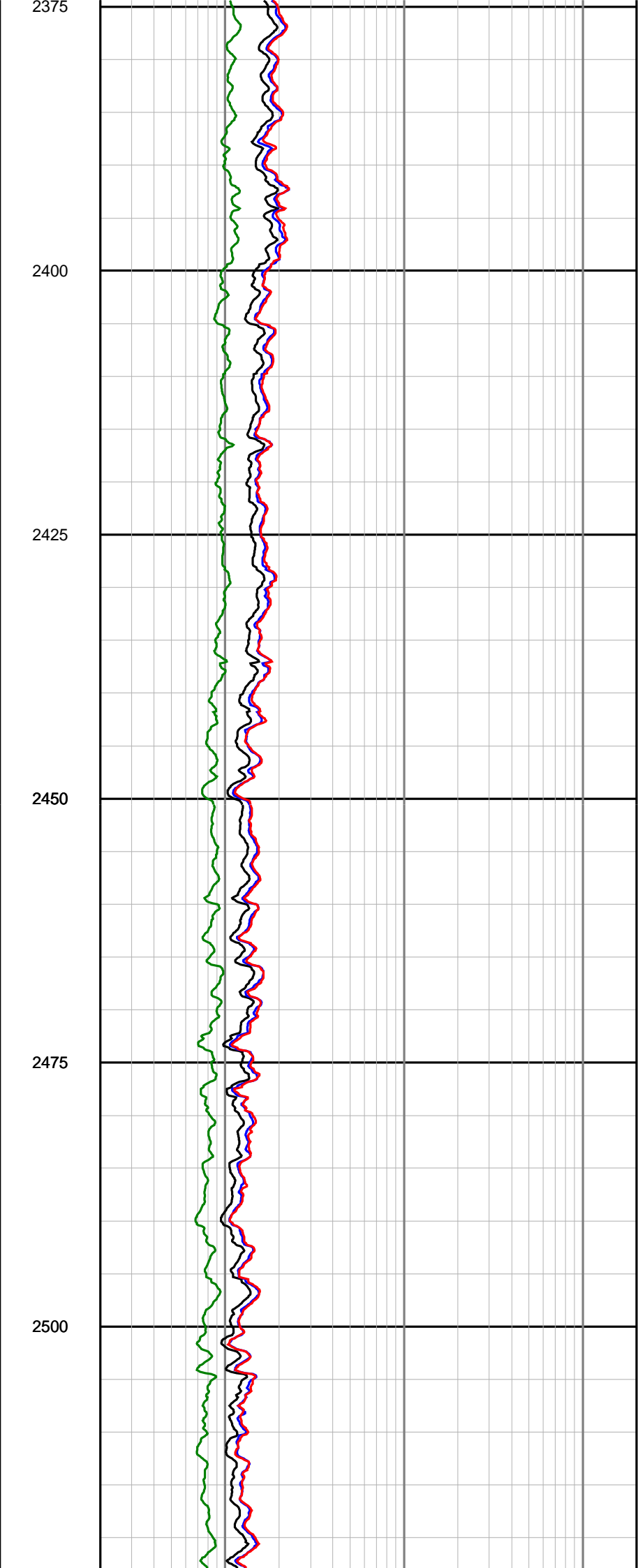
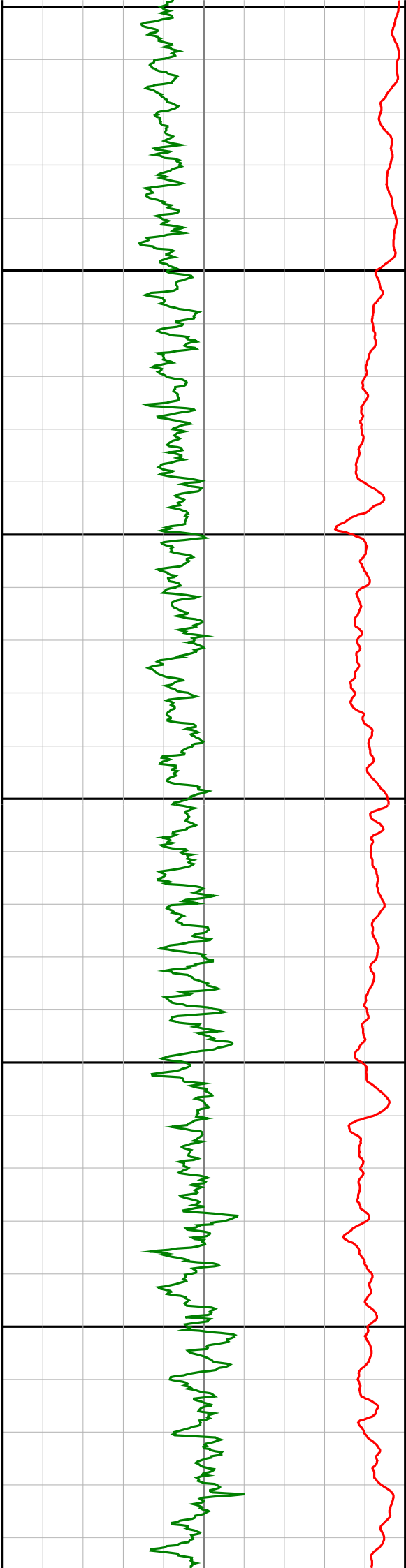


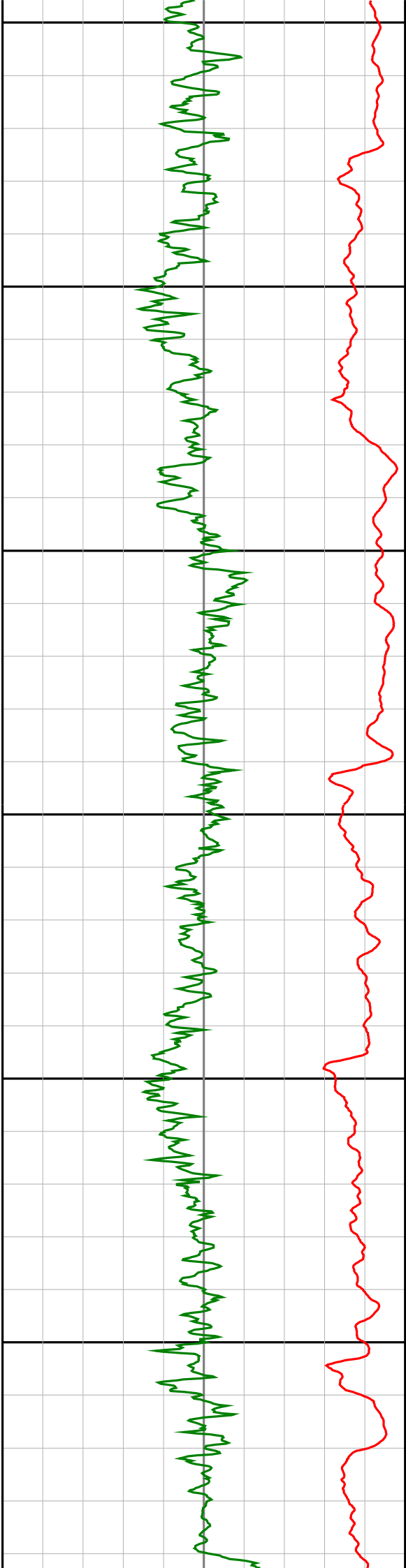












2525

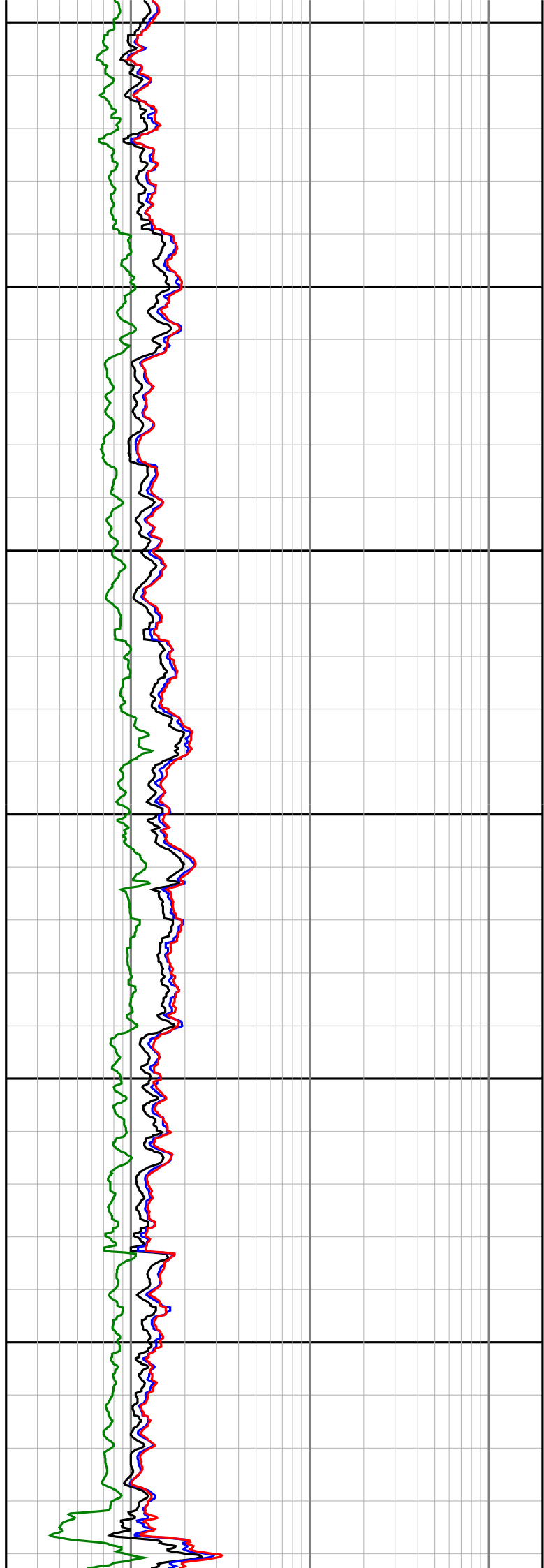
2550

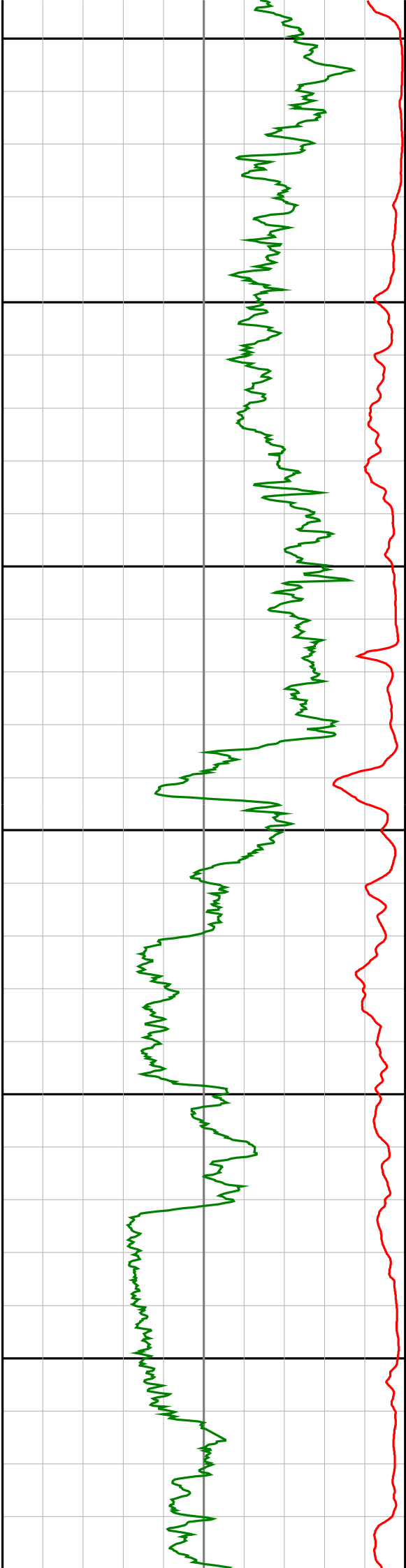
2575

2600

2625

2650





2675

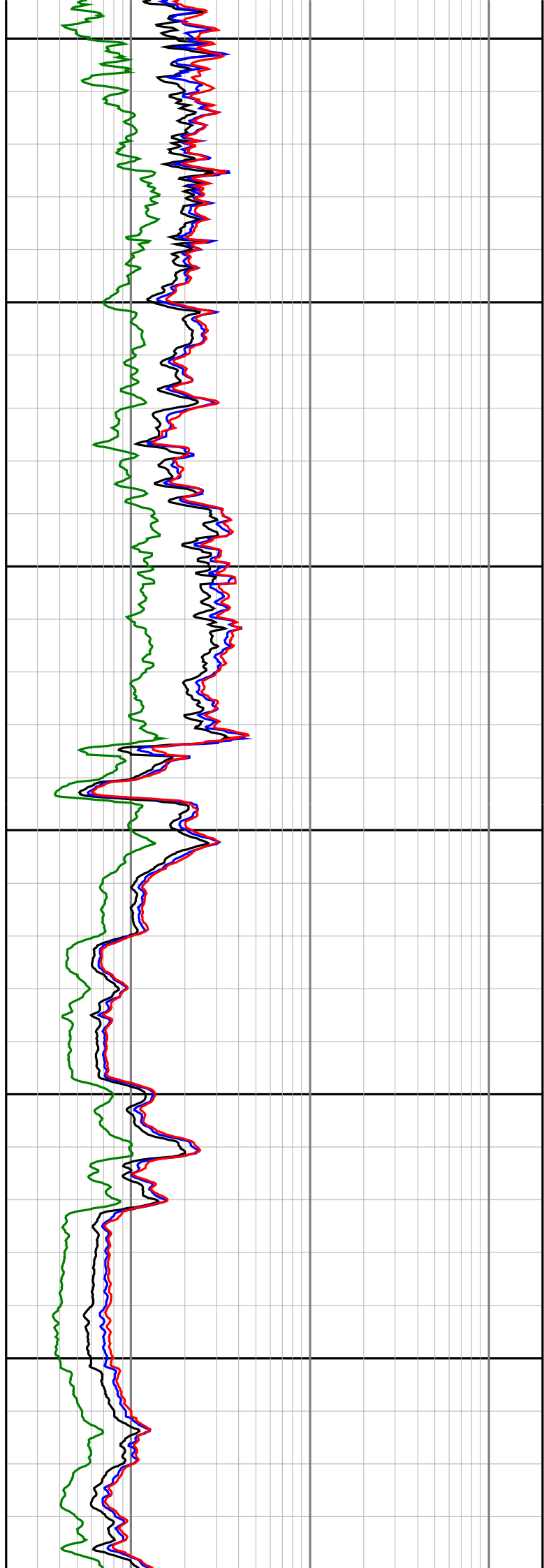
2700

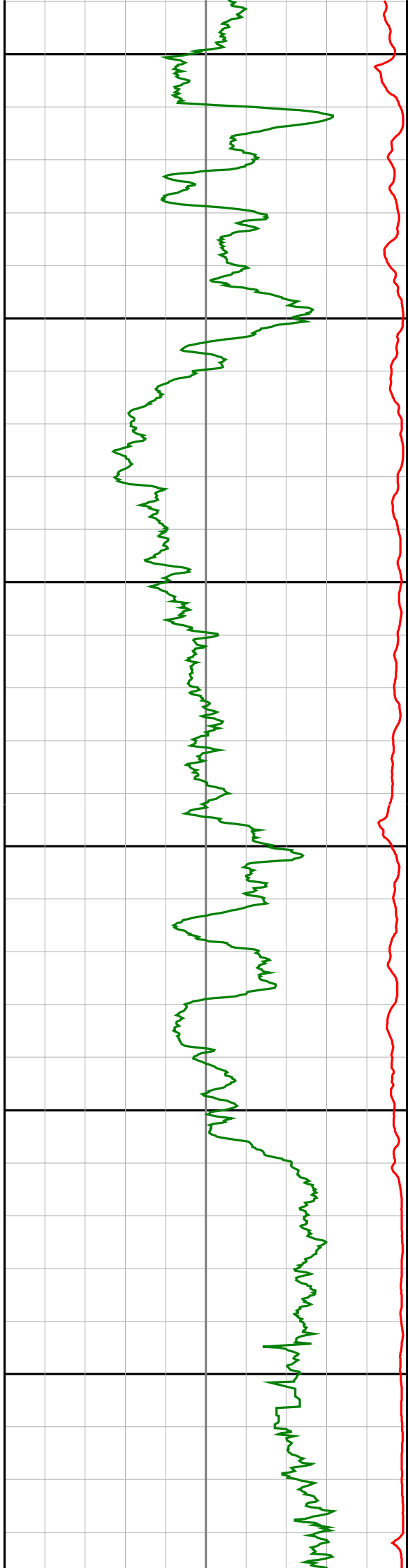
2725

2750

2775

2800





2825

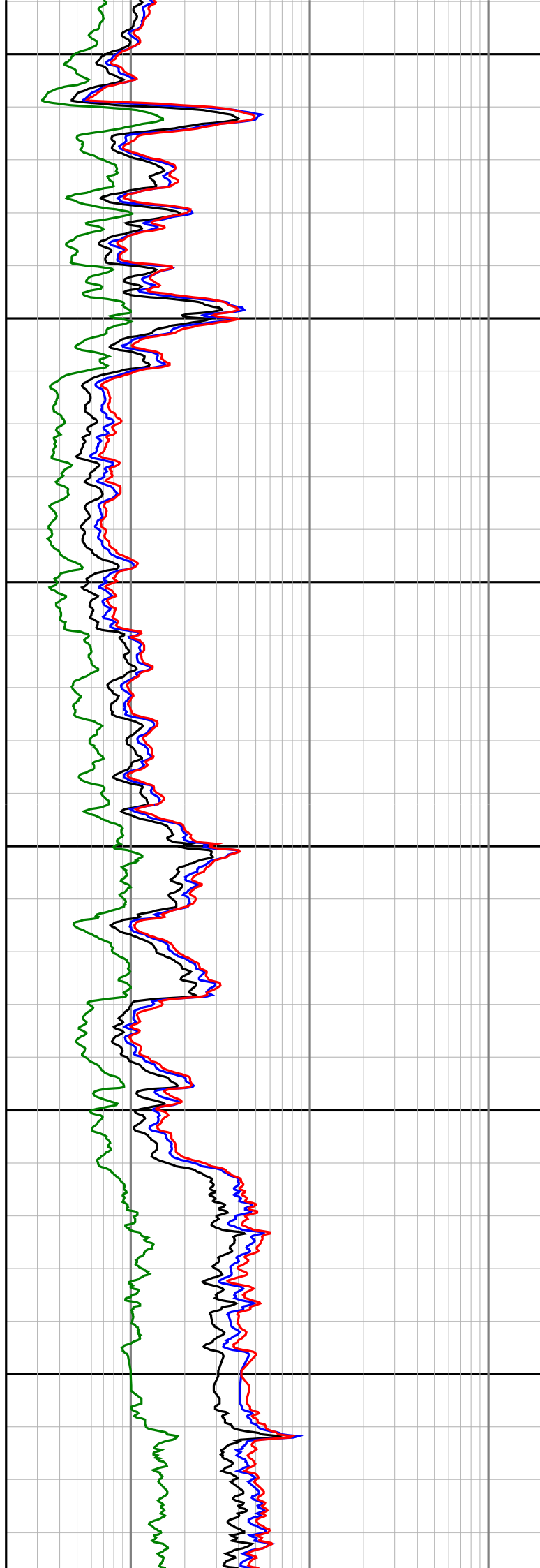
2850

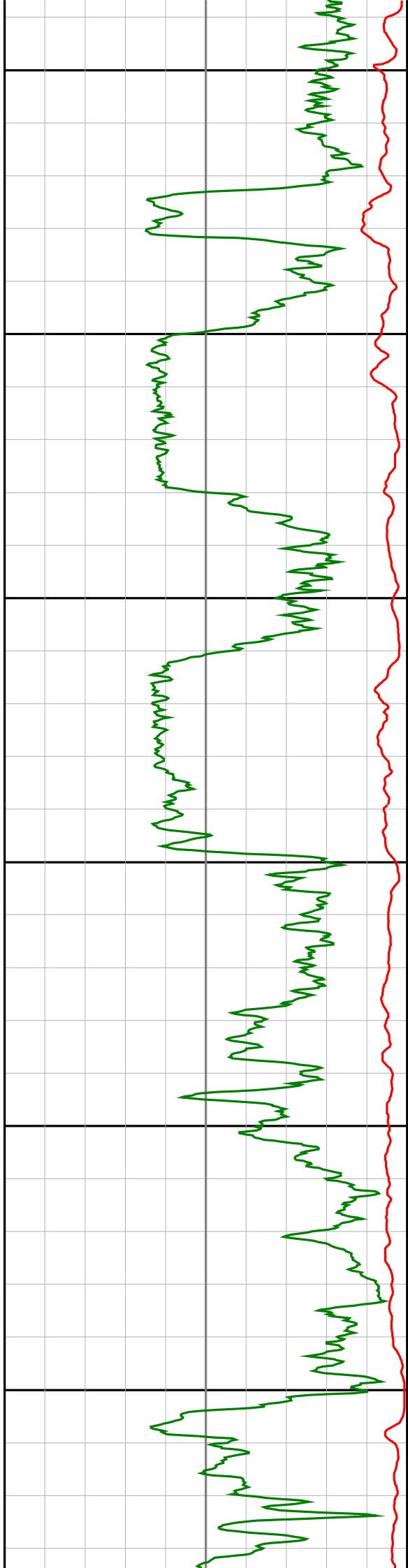
2875

2900

2925

2950





2975

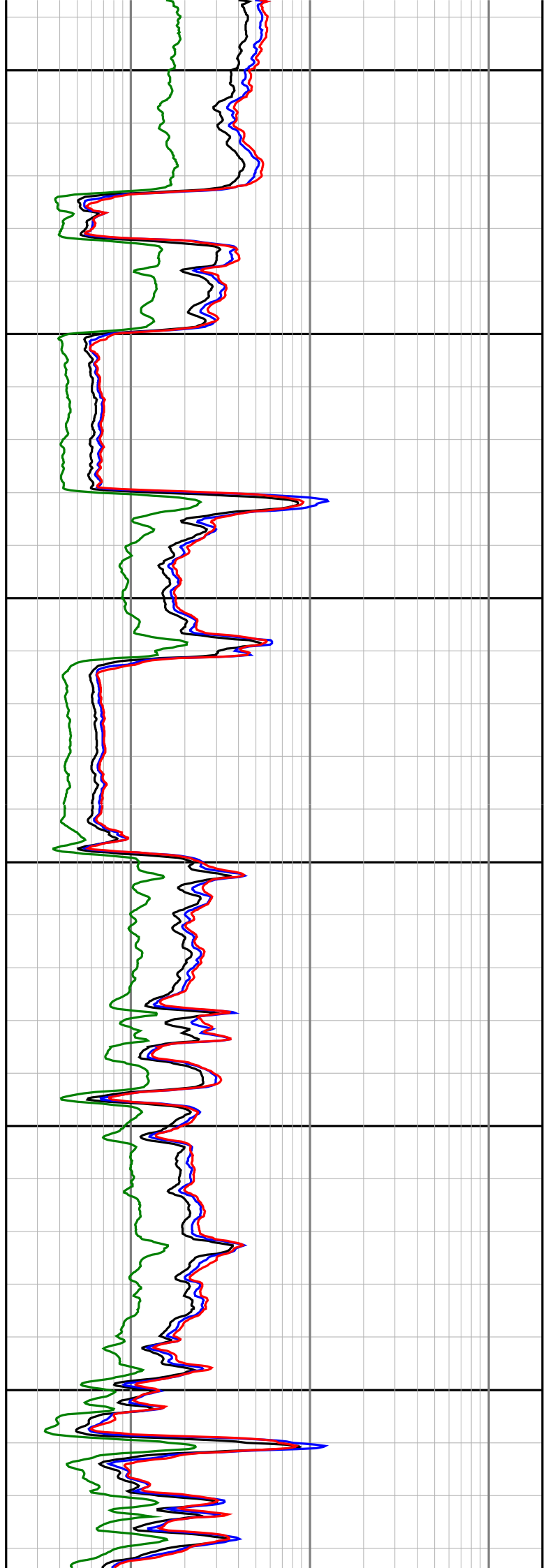
3000

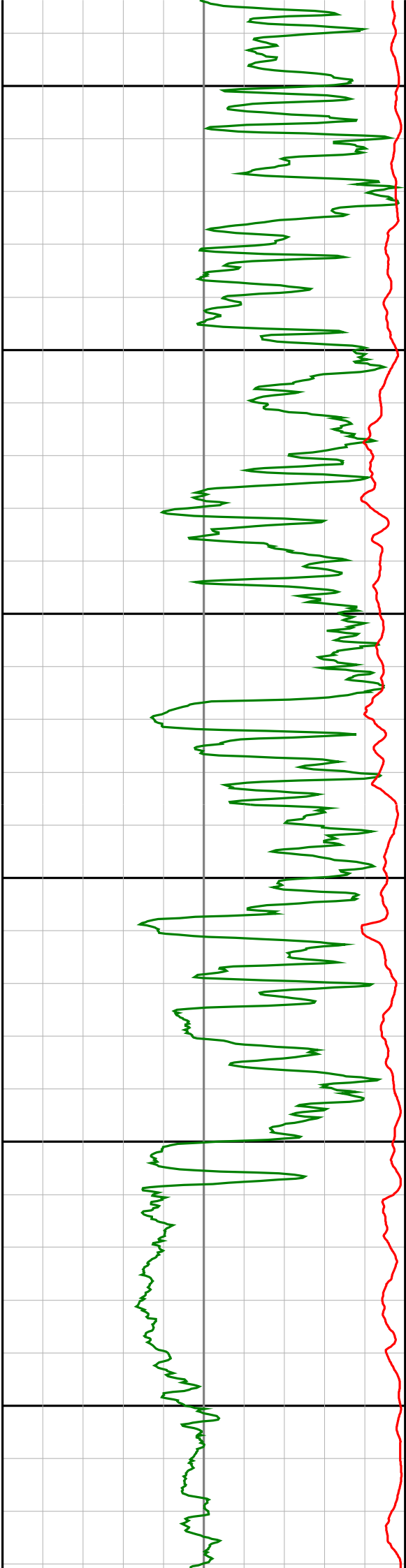
3025

3050

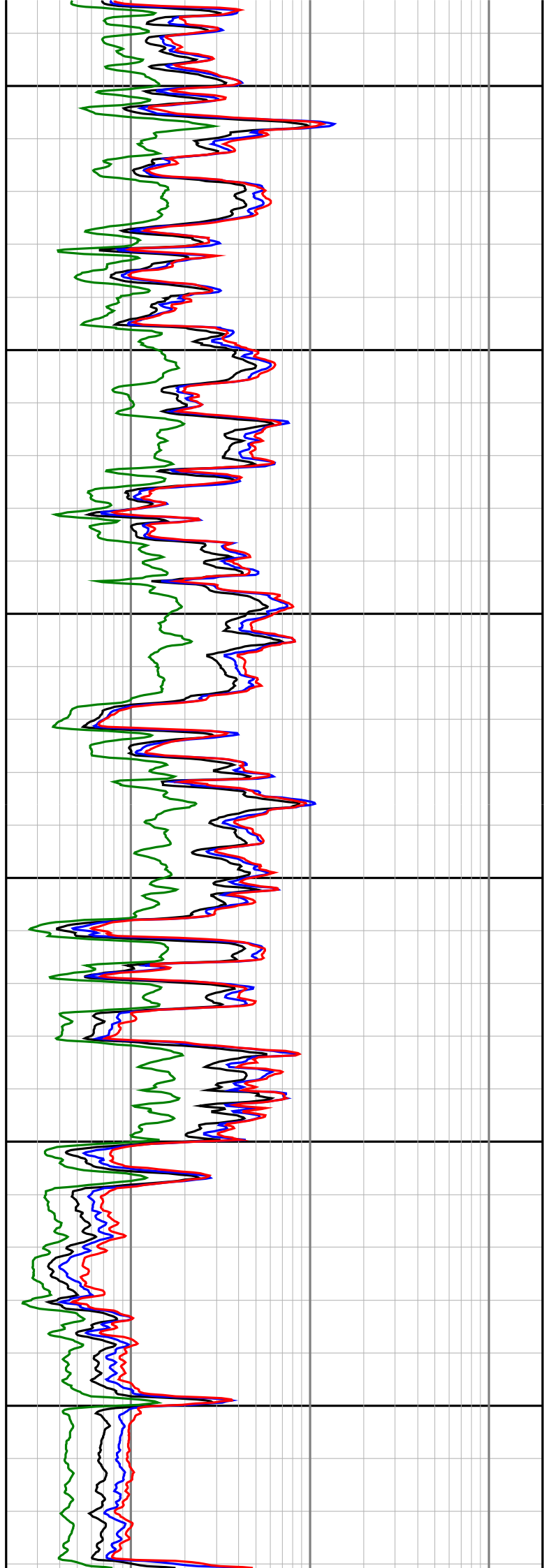
3075

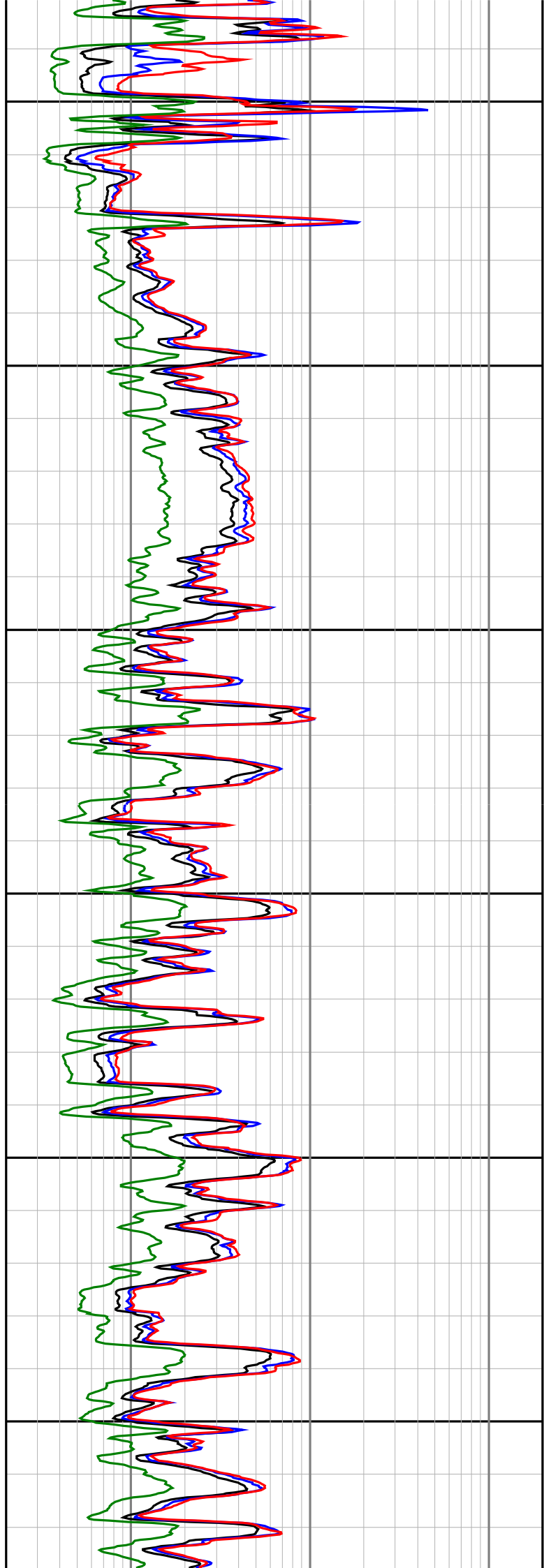
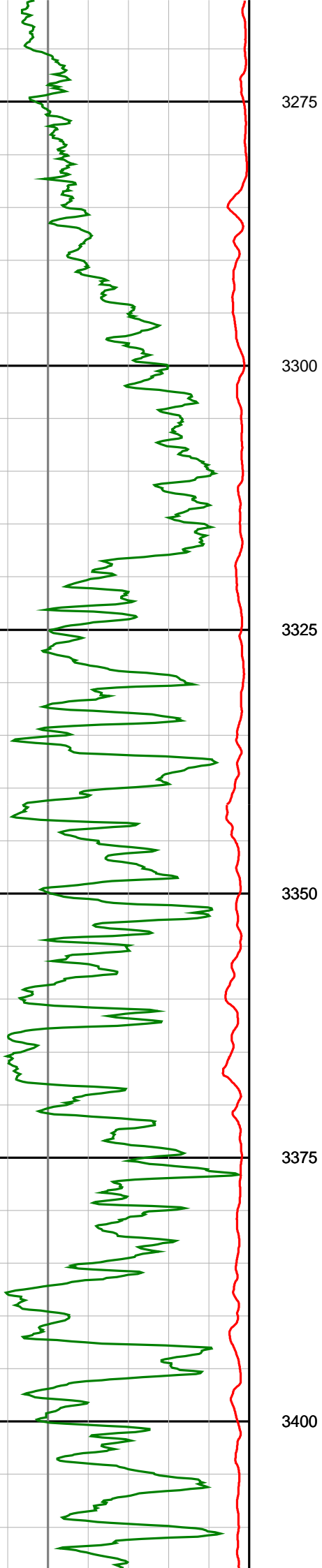
3100

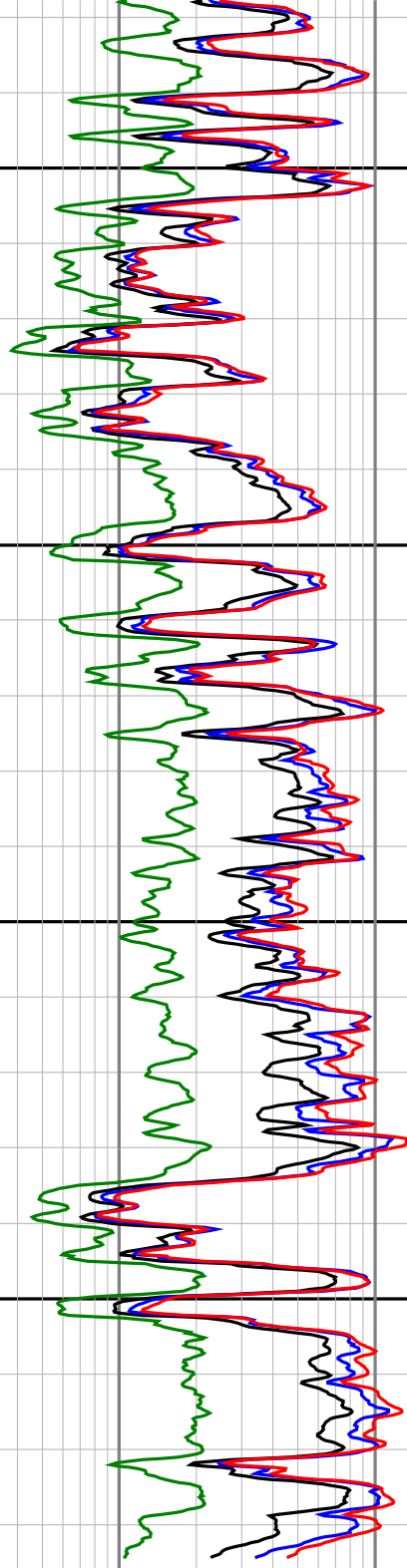
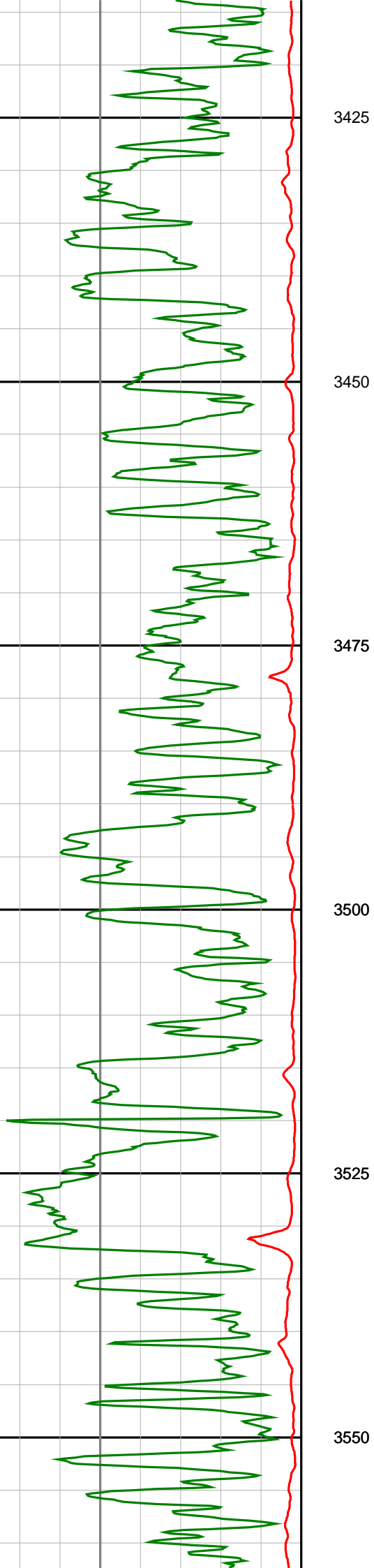


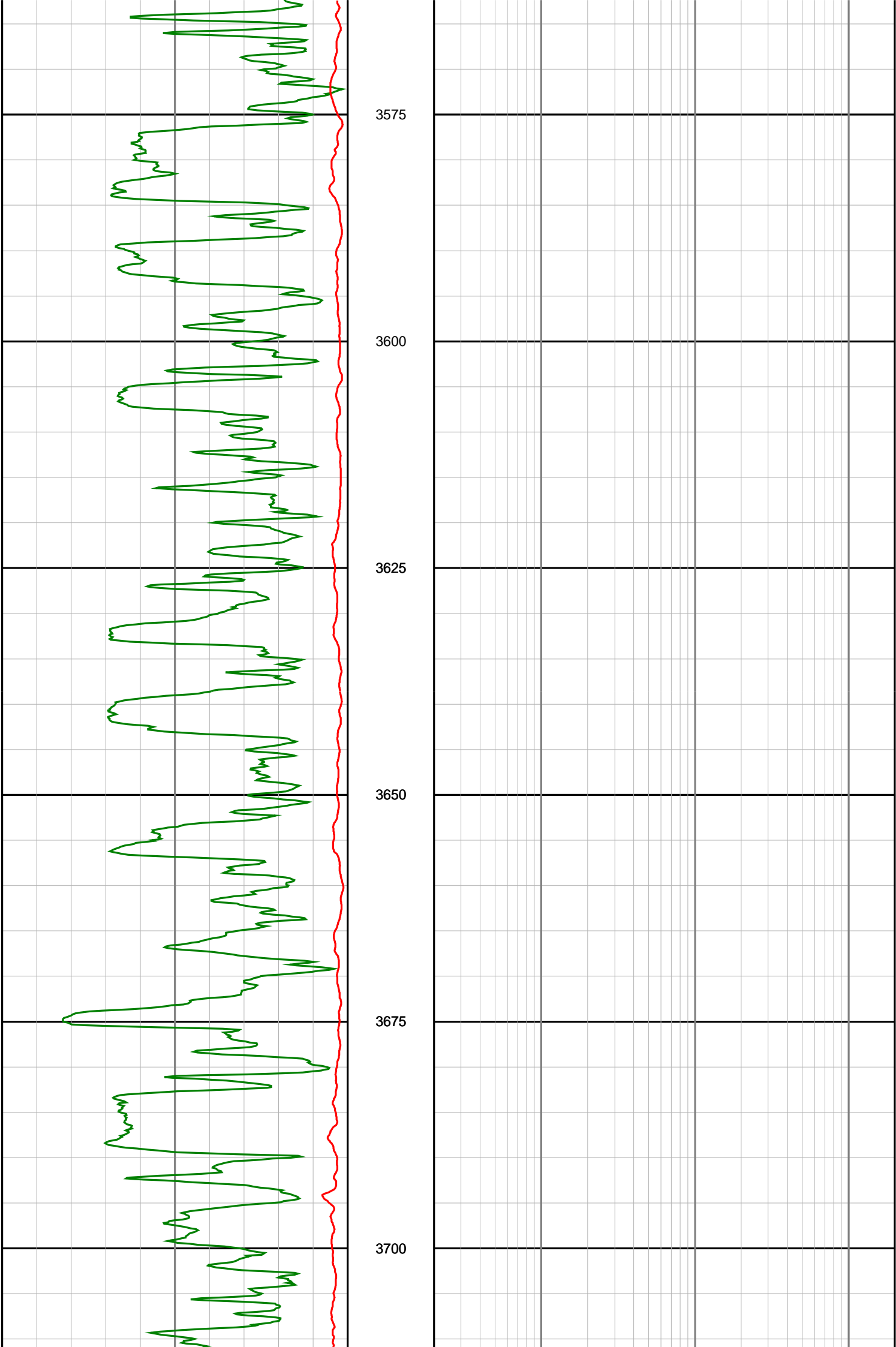


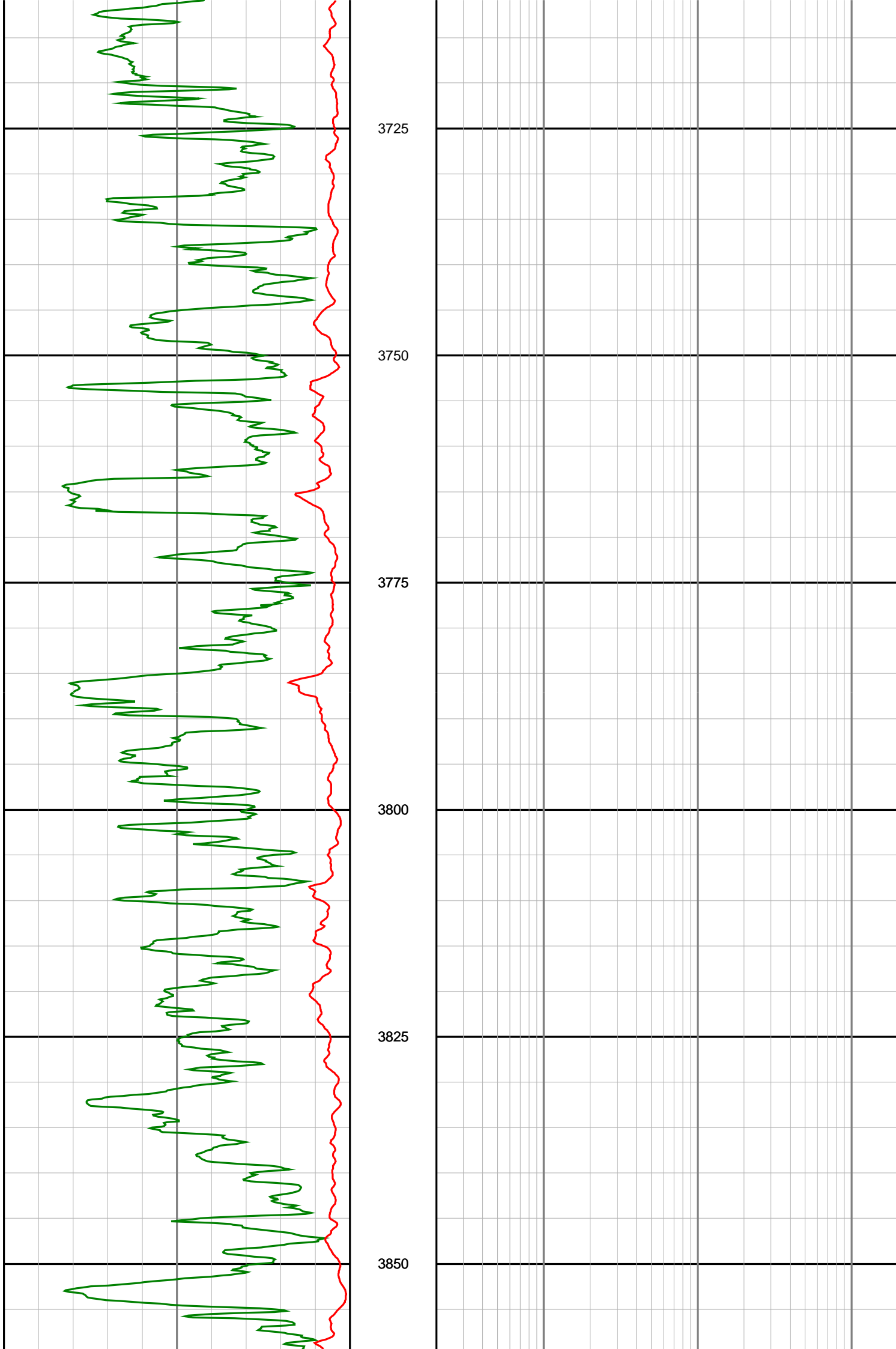
3125
3150
3175
3200
3225
3250

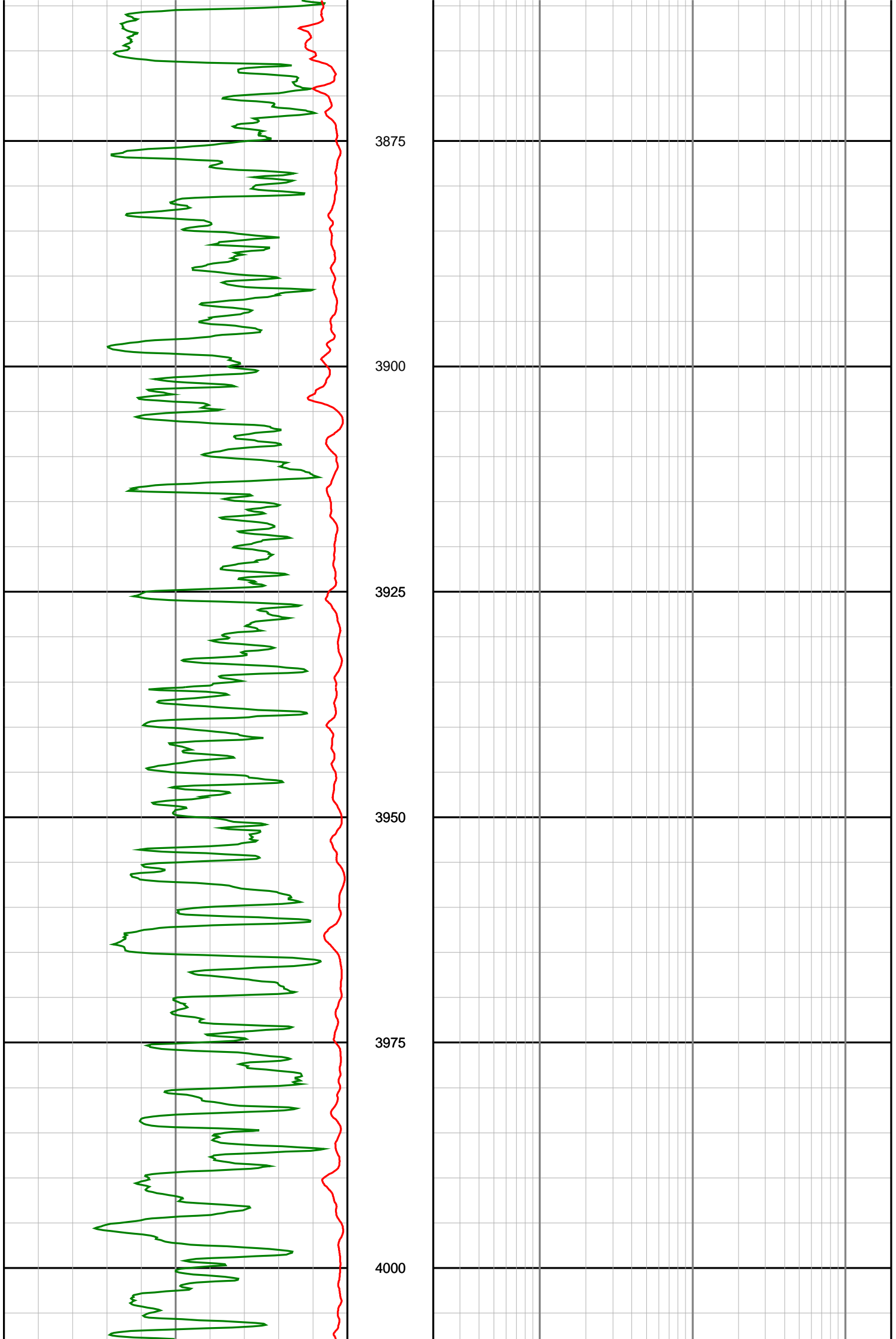


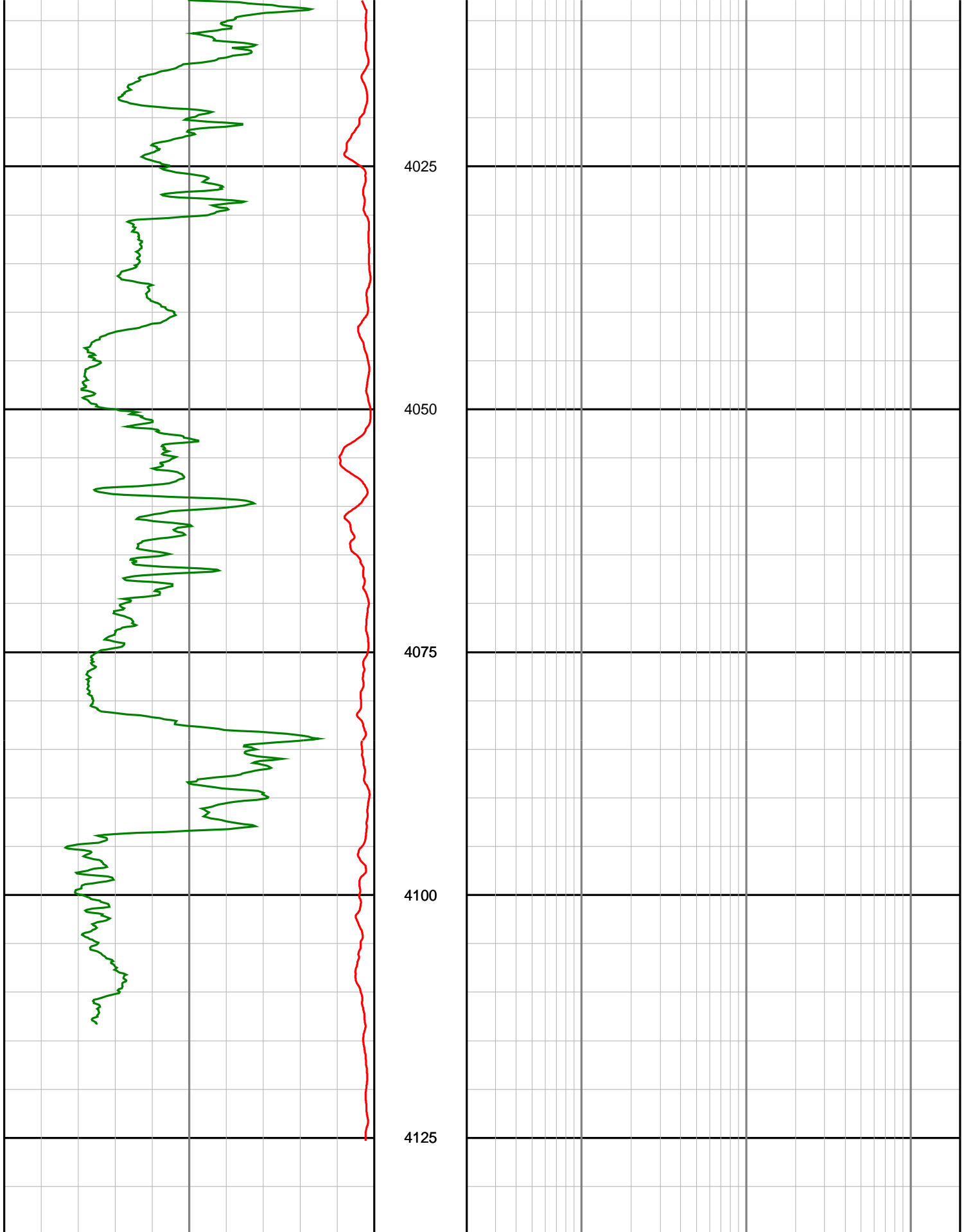












**Gamma Ray
(SGRC)**
api

0 200

**Depth
MD**
1:500

**Ext Shallow Phase Res
(SEXP)**
ohmm

0.2 200

**Rate of Penetration
(SROP)**
m/hr

500 0

**Shallow Phase Res
(SESP)**
ohmm

0.2 200

Medium Phase Res

	0.2	(SEMP) ohmm	200
	0.2	Deep Phase Res (SEDP) ohmm	200